

Independent Impact Assessment of CSR Projects

Supported by

Coromandel



FUTURE POSITIVE

FY 2023-2024



Executive Summary

Coromandel International Ltd. is a leading player in India's fertilizer sector, with diverse operations across fertilizers, specialty nutrients, crop protection, and retail. The company is recognized for its commitment to environmental stewardship and corporate responsibility, ranking amongst the top 20 best companies to work for and one of the ten greenest companies in India, as acknowledged by the prestigious Energy and Resources Institute (TERI)

The CIL CSR projects assessed are aligned to the CIL CSR policy which can be found [here](#).

- Bluesky Sustainable Business LLP, an **Independent Accredited inspection body** for Social Impact was contracted to assess the impact of their CSR projects for FY 23-24. The accredited Impact assessment methodology is based on **ISO 26000: Guidance on Social responsibility, Sch 7, Sec 135 of The Companies Act 2013 and its amendments thereof and National Guidelines for Responsible Business Conduct.**
- The stakeholder data was collected from a sample **size of 44 KIIs (Key Informants Interview) and FGDs (Focus Group Discussion) conducted with over 94 stakeholders over a period of 10 days across the geographical area of Kakinada, Vizag, Ennore, Sarigam, Dahej, Vijaywada etc.**
- The scope of the Impact Assessment are the **17 different projects** supported by CIL in FY 23-24 across five key thematic areas: **Healthcare, Education, Livelihood, Environment Protection, and Community Infrastructure Development** across 3 Indian states of **Andhra Pradesh, Tamil Nadu and Gujarat.**
- Of the 17 projects, **5 are ongoing projects (more than 1 year)** – demonstrating long term support for social causes.
- Of the 17 projects, **9 projects are implemented by 6 NGOS** demonstrating CIL's intention to collaborate and partner with NGOs and other civil society organisations.
- The strong and **multi-talented inhouse CIL CSR Team** has managed the remaining 8 CSR projects ensuring continuity of support.

Social Impact of Coromandel International Limited supported CSR programs

Healthcare



Through extensive upgrades to Coromandel Hospital and Coromandel Medical Centres, CIL's CSR funds have significantly enhanced healthcare services. The initiatives have led to a 483% increase in footfall at Coromandel Hospital, serving 108,059 patients in 2023-24. Key interventions at the Government General Hospital, Kakinada, reduced infant mortality rates to below 10%, benefiting 8,426 infants and children. Health awareness programs have reached over 49,345 community members, and ongoing projects continue to improve maternal and child health, impacting a total of 167,930 beneficiaries.

Education



CIL's "Karadipath Magic English SLL" program has transformed English proficiency for over 5,000 students in 25 schools across Gujarat, Andhra Pradesh, and Tamil Nadu. By training 227 teachers in modern, activity-based learning methods, the program has significantly enhanced functional English skills. Additionally, the Girl Child Scholarship Program provided financial assistance to 683 girls in Andhra Pradesh, supporting their educational pursuits and reducing early marriage rates. Overall, these initiatives have empowered students and teachers, fostering a brighter future for marginalized communities.

Livelihood



Coromandel International's commitment to women's empowerment has transformed the lives of over 450 women across Kakinada, Vizag, and Ennore through a range of livelihood initiatives. These programs focus on skill development and entrepreneurial support, fostering sustainable economic growth and personal development.

Environment



Coromandel International's CSR projects in Gujarat and Andhra Pradesh have positively impacted over 2,500 fishermen and supported extensive mangrove restoration efforts. In Kakinada, the removal of invasive weeds, establishing wind and shelter plantations in Hope Island, and provision of essential fishing equipment for local fishermen have bolstered livelihoods and ecosystem health. Meanwhile, the bio-shield (establishing a green barrier to prevent soil erosion by planting trees) along the coast of Gujarat promises long-term benefits for soil erosion control and marine life enhancement.

Community Development



Coromandel International's community development initiatives have provided community hall infrastructure, benefiting over 5,000 individuals. Key projects include constructing and renovating community halls, providing rural infrastructure support, and building function halls in Kakinada and Vizag. These initiatives enhance social cohesion, reduce event costs, and create accessible spaces for community gatherings and essential services, demonstrating Coromandel's commitment to building resilient communities

Based on the stakeholder feedback and documentary evidence, the assessment reveals a 'high-impact outcome' resulting from CIL CSR Projects in enhancing the quality of healthcare support for communities with limited access, improving education, empowering women through skill development, and contributing to community development.





List of Projects, Implementing partners and Project locations


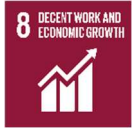



Theme		CSR Project	Implementing Agency	Project Location	Start Date	End Date
 Health	1	Coromandel Hospital	Direct Implementation by CIL	Kakinada	Feb 2021	Ongoing project
	2	CMC (Coromandel Medical Centres)	Direct Implementation by CIL	Vizag, Ennore, Sarigam		Ongoing project
	3	Support to Government General Hospital	Direct Implementation by CIL	Kakinada	April 2023	March 2024
	4	TB Alert Health Awareness – Build in community response to address health issues	TB Alert India	Vizag	August 2022	March 2023
	5	SAAS (Swarajya Abhyudaya Seva Samithi) – Health awareness project with a special focus on women & adolescent girls	SAAS (Swarajya Abhyudaya Seva Samithi)	Kakinada	September 2023	March 2024

 Education	6	Karadipath Education program	Karadipath Education company	Kakinada, Vizag, Sarigam, Ankleshwar, Chennai Ennore	March, 2023	Ongoing project
	7	Girl Child Education program	Direct Implementation by CIL	Kakinada, Vizag, South-1 (Vijaywada)	April 2023	March 2024
 Livelihood	8	Future CEO Program	IKKA Foundation	Kakinada (Vakalapudi, Valasapakala, Harbourpeta, Suryaraopeta)	July 2023	Jan 2024
	9	Women Business Leaders Program	IKKA Foundation	Kakinada (Vakalapudi, Valasapakala, Harbourpeta)	November 2023	March 2024
	10	Short Term Livelihood Programs for Women	IKKA Foundation	Visakhapatnam	Jan 2024	March 2024
	11	Advanced Tailoring Training	Sambhav Foundation	Ennore	Dec 2022	Jan 2024
	12	Work place Skill Development	Sambhav Foundation	Ennore	June 2023	Aug 2023
 Environment	13	Green Belt Plantation and Vehicle support to Forest Dept	Direct Implementation by CIL	Kakinada	Nov 2023	Ongoing
	14	Mangrove plantation	VIKAS Centre for Development ISHAVASYAM	Dahej, Bharuch District, Gujarat	Aug 2023	Ongoing
 Community Development	15	Community hall construction	Direct Implementation by CIL	Kakinada (Vakalpudi and Valasapakala)	Nov 2022	March 2023
	16	Multipurpose utility hall construction, Community Hall Construction, Infrastructure work	District Administration, Kakinada	Panduru village and Gorripudi village of Karapa, Karapa village Kakinada rural	Feb 2024	March 2024

	17	Community halls Community borewells Community Open Gyms	Direct Implementation by CIL	Vizag	Nov 2022	March 2023
--	----	---	------------------------------	-------	----------	------------

Alignment with the Companies Act & UN Sustainable Development Goals

Theme	CSR Project	Mapping to Sec-135 (The Companies Act)	Mapping to UN SDGs
Health	Coromandel Hospital	(i) Promoting healthcare, including preventive healthcare.	  Ensure healthy lives and promote well-being for all at all ages
	CMC (Coromandel Medical Centres)		
	Support to Government General Hospital		
	TB Alert Health Awareness – Build in community response to address health issues		
	SAAS (Swarajya Abhyudaya Seva Samithi) – Health awareness project with a special focus on women & adolescent girls		
Education	Karadipath Education program	(ii) Promoting education, including special education and employment enhancing vocation skills especially among children, women, elderly and the differently abled and livelihood enhancement projects.	  Ensure inclusive and equitable quality education and promote lifelong learning opportunities for all.
	Girl Child Education program		

Livelihood	Future CEO Program	(ii) Promoting education, including special education and employment enhancing vocation skills especially among children, women, elderly and the differently abled and livelihood enhancement projects	  <p>"Promote sustained, inclusive and sustainable economic growth, full and productive employment and decent work for all."</p>
	Women Business Leaders Program		
	Short Term Livelihood Programs for Women		
	Advanced Tailoring Training		
	Work place Skill Development		
Environment	Green Belt Plantation and Vehicle support	(iv) Ensuring environmental sustainability, ecological balance, protection of flora and fauna, animal welfare, agroforestry, conservation of natural resources	  <p>"Protect, restore and promote sustainable use of terrestrial ecosystems, sustainably manage forests, combat desertification, and halt and reverse land degradation and halt biodiversity loss."</p>
	Mangrove plantation		
Community Development	Community hall construction	(x) Rural development projects	
	Multipurpose utility hall construction, Community Hall Construction, Infrastructure work		
	Community halls Community borewells Community Open Gyms		



Key Impact Findings

HEALTHCARE INITIATIVES

Key Impact Findings

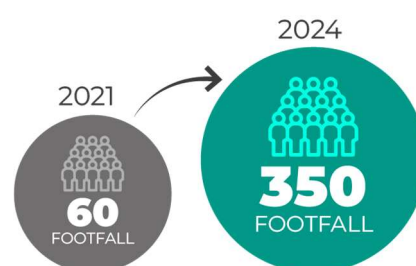
HEALTHCARE INITIATIVES

Coromandel's healthcare interventions focus on providing quality and accessible healthcare infrastructure and increasing the awareness on health issues, particularly for marginalized communities.

CIL CSR Funds have been utilised to renovate and upgrade Coromandel Hospital (upgraded from CMC in February 2021), maintain services at existing Coromandel Medical Centres) and partnered with Government General Hospital, Kakinada to renovate the NICU (Neo-natal Intensive Care Unit) & PICU (Pediatric Intensive Care Unit).

The details of the impacts are listed below:

- Coromandel Hospital, Kakinada is a preferred healthcare centre with around **350 footfalls in 2024 compared to 60 footfalls on average in 2021**. The 483% increased foot fall demonstrates the growing trust & popularity in the community it serves – mainly the communities living in rural and urban Kakinada which includes fishing communities, farmers, and daily wage workers.



- The hospital provided medical services to **108,059 patients (61,951 females and males)** between April 2023 and March 2024.



- Outpatient (OP) registration at the hospital is available for **a nominal fee of ₹10**, compared to ₹300-₹500 at private hospitals like Apollo.



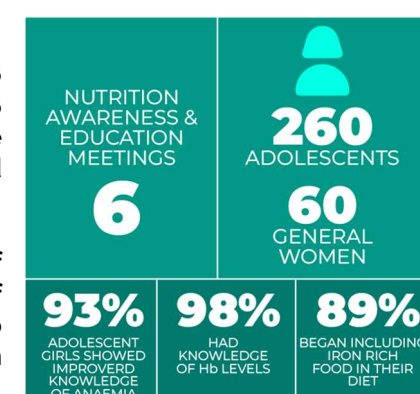
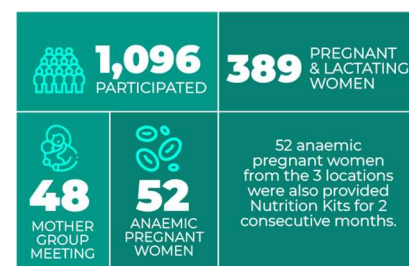
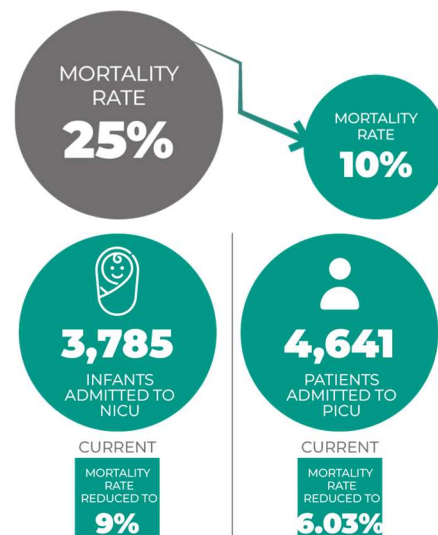
- CSR funds from CIL is being **utilized to build additional floors** (Ground floor, 1st floor and 2nd floor), specialised equipment to the existing infrastructure to add specialized departments like orthopaedics, gynaecology, and paediatrics, enhancing the hospital's capacity to meet growing healthcare needs.

- Investment in modern technology and hospital management services has improved patient experience, **with stakeholders rating Coromandel Hospital highly** for its efficient service, reasonable pricing, and shorter waiting times compared to government hospitals.

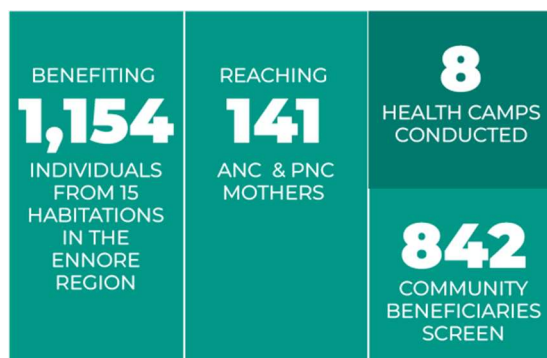
- Coromandel Medical Centre (CMC) Ennore, located in the Kathivakkam Municipal Complex, **provided medical services to 10,193 people** in the Ennore region. The CMC centre in Ennore is strategically located in the Kathivakkam Municipal Complex for easy accessibility both by rail and roads.



- A significant impact of CIL's intervention at Government General Hospital (GGH) Kakinada **has been the reduction in infant mortality rate (IMR) from 25% to below 10%, making it the lowest in the state.**
- A total of **3,785 infants were admitted to the NICU, and patients were admitted to the PICU** in 2023-24, benefiting from the upgraded facilities.
- The PICU **mortality rate was reduced to 6.03%** (out of 4,641 total admissions in 2023-24), **down from 24% previously.** The NICU mortality rate was reduced to **9% (out of 3,785 total admissions in 2023-24).**
- A health awareness project focused on women and adolescent girls, implemented by SAAS (Swarajya Abhyudaya Seva Samithi) NGO in three panchayat locations—Vakalapudi, Valasapakala, and Suryaraopeta—reached out to **576 adolescent girls**, providing essential health education through digital and in-person sessions.
- A total of **48 mother group meetings** were conducted. These meetings successfully reached out to **389 pregnant and lactating women** out of **1096 participants.**
- Among **389 pregnant and lactating women**, **52 pregnant women** were identified as anaemic and referred by Lead Mothers for medical support. These **52 anaemic pregnant women** from the 3 locations were also provided Nutrition Kits for 2 consecutive months.
- The Lead mothers have conducted a series of **6 nutrition awareness and education meetings** at 6 different Anganwadi centers, the lead mothers were able to reach around and nutrition was disseminated effectively.
- Of the stakeholders engaged for feedback, **93% of adolescent girls showed improved knowledge of anaemia symptoms, 98% had knowledge of Hb levels, and 89% began including iron-rich foods in their diet after attending awareness sessions.**
- TB Alert identified local SHG women in 10 project villages and built their capacities on TB, diabetes, hypertension, and mother and child healthcare. A total of **36 women's groups (with approximately 150 women)** were given training by TB Alert. These 36 women groups reached out **to community members in 10 villages in Vishakhapatnam** to conduct health awareness sessions.



- United Way Chennai implemented "The Nalam Project," **benefiting 1,154 individuals from 15 habitations in the Ennore region**. The project included four awareness sessions on maternal and child health and sensitization on available government health schemes, reaching **141 ANC (ante-natal care) and PNC (post-natal care) mothers**. **8 health camps conducted as a part of this program screened** community beneficiaries' health experts from four reputed hospitals, providing medical benefits that would otherwise be inaccessible to them.



Stakeholder Quote – "At CMCI, we save around 500-1000 rupees per visit because the tests are cheaper, medicines are priced nominally, and the outpatient fee is just Rs 10, even for specialist doctors. Unlike costly private hospitals and overcrowded government facilities, Coromandel offers affordable care without compromising on quality."

- N Srinivasa Rao – Hanuman Sanjeev Colony – 53 years – Diabetes Patient

Case Study | A Story of Health and Hope: Bhanu's Experience at CMC Vizag

Bhanu, a resident of Gajuwaka, Vizag, faced significant challenges in accessing affordable healthcare for her family of five. As a low-income family, they often had to compromise on the quality of treatment at government hospitals due to limited resources.

However, Bhanu's life took a positive turn when she discovered Coromandel Medical Centre in Vizag. Over the past six years, her family has relied on Coromandel for their healthcare needs, benefiting from the hospital's high-quality services at affordable prices.

Bhanu's mother-in-law, who suffers from orthopaedic issues, has experienced significant relief since receiving treatment at Coromandel. Additionally, Bhanu herself has utilized the hospital's services for pregnancy check-ups and her children's healthcare needs.



Impressed by the quality of care provided, Bhanu has recommended CMC Vizag to over 50 families in her community. Her positive experiences have helped to spread awareness about the CMC's services and alleviate the healthcare concerns of many low-income individuals.



Key Impact Findings

EDUCATION INITIATIVES

Key Impact Findings

EDUCATION INITIATIVES

"Karadipath Magic English SLL" program implemented by Karadipath Education Company is a transformative initiative that aims to rapidly improve the English proficiency of children from primarily non-English speaking backgrounds. **Implemented in 25 schools in 5 regions (Sarigam, Kakinada, Vizag, Ankleshwar, Chennai) across 3 states of Gujarat, Andhra Pradesh and Tamil Nadu State,**

- 5000+ students from Government Schools have benefitted with access to improving their English-speaking skills.
- The programme trained 227 government school teachers providing them an opportunity to learn modern teaching aids and methodology. e.g. use of digital teaching methods, playful materials etc;
- Improved functional English skills,(including reading, writing, speaking, and listening) were evident in Focus group discussions with school teachers and students where 100% students and teachers mentioned that the Karadipath program provided them with ABL (**Activity based learning**) sessions which was useful for students to learn through an alternative approach.



Stakeholder Quotes and Feedback for the Karadipath program –

"One of the biggest advantages of the Karadi Path program is that it makes learning English so much easier for our students. After completing the activities in the morning, our teachers find it much more effective to teach English. In fact, the program's integration of subjects like history and science into stories and songs helps our students learn all subjects better."

– D Nagalakshmi – School Teacher, Kakinada

- Girl Child Scholarship Program in Government schools is a flagship CIL CSR project operational for many years in Andhra Pradesh.** In Kakinada & Vizag Financial assistance of Rs.5000 and Rs 3500 is provided to the 1st & 2nd rank girl students from Grade 8 to 10 in 14 schools. In FY 23-24, 189 girls, were provided the scholarship – thus providing financial help and motivation to continue their studies.

In Kakinada & Vizag		Vijaywada	
189		494	
GIRLS WERE PROVIDED SCHOLARSHIP		GIRLS WERE PROVIDED SCHOLARSHIP	
₹5000	₹3500	₹5000	₹3500
is provided to the 1 st rank girl students from Grade 8 to 10	is provided to the 2 nd rank girl students from Grade 8 to 10	is provided to the 1 st rank girl students from Grade 9	is provided to the 2 nd rank girl students from Grade 9

- In South-1 (Vijaywada), every year 2 s (1st and 2nd rank) from Grade 9 are selected for the Scholarship support. A financial assistance of Rs 5000 for 1st rank and Rs. 3500 for 2nd rank is provided to be cashed when they are class 10th. In total 494 girl students from 246 government schools were supported under the scholarship program in 6 different locations near Vijaywada location.

Sl. No	Location	No. of schools supported under scholarship program	No. of Scholarship recipients	Amount spent for scholarship
1	Krishna & NTR - South-1	50	100	4,26,500
2	Karimnagar- South-1	45	90	3,82,500
3	Nellore- South-1	42	84	3,54,000
4	Nizamabad - South-1	36	73	3,12,500
5	Vizianagaram - South-1	38	77	3,29,500
6	Warangal - South-1	35	70	3,00,500
7	Kakinada	9	117	
8	Vizag	5	73	

- 100% of the interviewed students and school teachers reported that the scholarship winners are encouraged to use the scholarship amount to purchase educational materials – books, coaching materials for NEET Exam, competitive exams, tuition fees, school uniforms etc.
- During the FGD with students and KII with School principals of 8 schools across Kakinada, Vizag and South-1 region, it was reported that all the students receive the Coromandel scholarship amount in their personal bank accounts unlike the government scholarship scheme of Rs, 15,000 per year which is transferred to student's mothers' bank accounts.
- During the KII with school principals of 8 schools, they observed that they are seeing more instances of parents supporting girls' education – and consequently delaying their marriage because the scholarship reduced their financial burden of educating girl child.
- In Vijaywada, the sample school teachers who were engaged for feedback found the scholarship amount to be beneficial to the students to pursue higher education or prepare for competitive exams like NEET. The scholarship support from Coromandel supplements the other education financial scholarship the students receive from the government and contributes to further their educational aspirations.
- During the FGD with Scholarship beneficiaries in Vijaywada, the girl students reported that they used the scholarship amount for education purposes like purchasing text books, guides, project work materials, entrance exam materials like NEET etc. These students also confirmed that they are recipients of the "Amma Vodi scheme" -A state sponsored scheme in Andhra Pradesh wherein each student receives education grant of Rs. 15,000 per year.
- One of the beneficiary interviewed as a part of the impact assessment has been selected for the NMMS (National Means-cum-Merit Scholarship Scheme). NMMS is a central government scholarship scheme wherein each child receives Rs. 12,000 per year for the next 5 years on clearing the scholarship exam. She mentioned that she now has sufficient funds to support her studies and sponsor her coaching materials for competitive exams.
- 5 schools in Vijaiwada have been fitted with an RO plant which was very appreciated by the stakeholders. The drinking water in Vijaiwada is high on fluoride content and the availability of RO water in the schools address important health issues.

Case study | A Story of Resilience and Triumph: Lakshmi Prasanna's Journey

Lakshmi Prasanna, a 10th grade student from Vijaywada, has faced significant challenges in her life. At the tender age of four, she lost her father, leaving her mother to raise her alone. Her mother, a daily wage laborer in agriculture, worked tirelessly to provide for Lakshmi's education and their basic needs. Despite their hardships, Lakshmi's determination to succeed shone through.

Inspired by her mother's unwavering support, Lakshmi excelled in her studies. With the help of government scholarships, she was able to continue her education and alleviate some of the financial burden on her family. The Coromandel scholarship, in particular, provided a crucial boost to her academic pursuits. It gave her immense motivation to pursue her studies and do well.

Lakshmi's journey is a testament to the power of scholarship support like Coromandel's Girl child scholarship and the positive impact it can have on young girls and communities. Her dedication, coupled with the support she received, has enabled her to overcome adversity and pursue her dreams.



Stakeholder Quote – “Once a girl gets the scholarship support based on their merit, she has her own positive identity in the village and school. This inspires and motivates other girls also in the school to do well in studies. Another positive change has been improvement in Girls school attendance in schools”

- PVSSSS Anjaneya, HM, ZPHS – Mindi



Key Impact Findings

LIVELIHOOD INITIATIVES

Key Impact Findings

LIVELIHOOD INITIATIVES

Coromandel International's commitment to women's empowerment has transformed the lives of over 450 women across Kakinada, Vizag, and Ennore through a range of livelihood initiatives. These programs focus on skill development and entrepreneurial support, fostering sustainable economic growth and personal development.

- 2 initiatives in Kakinada by IKKA Foundation – "Future CEO" and "Women Business Leaders Program"
- 2 initiatives in Vizag – "Project-LIFE - Livelihood for vulnerable Woman" implemented by Dhan Foundation and "Short Term Livelihood Programs for Women" implemented by IKKA Foundation;
- 2 initiatives in Ennore – "Advanced Tailoring Training" and "Work place Skill Development" by Sambhav Foundation.

The "Future CEO Program" is a 6-month initiative designed to empower women in two crucial areas: Personal effectiveness and Enterprise Development. The program equips participants with the skills and knowledge needed to navigate life's challenges and build successful businesses.

Programme Elements	Status (2023-2024)
No. of Beneficiary Women trained	27
No. of Villages covered	4
Travel Workshop – Enterprises visited	13
Exposure Visits	4
Community Leader Engagement Sessions	3
Business Mentoring Sessions	5
1-1 Mentoring	3
No. of women trained on garment manufacturing	13
No. of Group enterprises supported with Branding and Legal Support	2

Stakeholder Quote – *"The training program has been incredibly beneficial for me and my family. I've gained the confidence and skills to start my own business, and my family is fully supportive of my entrepreneurial journey. I believe I can earn between Rs. 10,000 and Rs. 15,000 in the next year, thanks to the knowledge and tools I've acquired through this program."* –

Farheen – 4 months – Valasapakala – 40 years – Home Made Snacks

- 80% of participants started their own businesses or expanded existing ones, indicating a high level of entrepreneurial activity. 24 of the 27 women enrolled into the programme have already initiated their businesses individually or in groups.
- 70% of participants said that they were focussed on pursuing personal aspirations, reflecting a heightened sense of agency and confidence.
- 80% of participants had created well-structured business plans, demonstrating their acquired skills in this area.
- The **"Women Business Leaders Program" is a three-month initiative** specifically designed to support and empower women entrepreneurs from the rural fishing community in Kakinada. It focuses on building business acumen and providing technical skills to enhance their garment making businesses.

Particulars	Status
Total women enrolled and trained Batch 1	36
Total women enrolled and trained Batch 2	34
Total resource persons deployed for training	7
Total no. of workshops conducted with women	31

The key impacts of both livelihood programs are evident in:

- **100% of the sample surveyed** agreed that they gained practical knowledge and skills in business operations, marketing, finance, and operations which contributed to the success of their business.
- **50% of the sample surveyed reported an income increase** of at least Rs. 3000 after their participation in the programme.
- **70% of the participants** agreed that the program has helped create an identity for them helping them in sustaining the business vagaries more confidently.
- **85% of participants maintained a 70% attendance** throughout the programme demonstrating the effectiveness of the program.

Case Study | A Story of Resilience: Nookalamma's Journey

Vaddadi Nookalamma, a mother of one son, faced significant challenges in her life. Her husband's meager income as a daily wage laborer struggled to support her family, due to which 5 years back she started a tiffin business; but the COVID-19 pandemic further exacerbated their financial difficulties leading her to close her tiffin shop.

Determined to improve her family's situation, Nookalamma decided to restart her tiffin center with the support received from Coromandel through its entrepreneurship program, in collaboration with Dhan Foundation. Despite the tragic loss of her sister during the pandemic and the added responsibility of caring for her sister's two orphaned children (daughters), Nookalamma persevered.



Project LIFE - Livelihood for vulnerable Woman (Vizag)

Coromandel International, in collaboration with DHAN Foundation, actively participated in the final selection of **25 women and granted them Rs 20,000 as a business capital for their business** in 2023-2024.

During the FGD **with 6 SHG women beneficiaries of DHAN Foundation**, all the participants agreed that the financial support was crucial for them to start or stabilise their existing business. The support and guidance from Dhan Foundation gave them confidence to take the risk associated with their business. Their ability to run a successful business will impact their ability to provide a sustainable source of income enabling them to support their family.



"The Dhan Foundation program has been a lifeline for women like us. The financial support of Rs 20,000 each and training we received have helped us expand our businesses and improve our lives. We are now able to support our families and contribute to our community's economic growth."

- Sridevi - Tiffin Shop, Visakhapatnam

Case Study | Ms. Prameela's, a beneficiary of this project is a 24-year-old widow heading her family in Gullalapem, Sriharipuram. She has a tailoring shop wherein she earns about Rs. 200 daily. The grant of Rs. 20,000 she received from this project gave her an opportunity to invest in purchasing a new zigzag machine which increased the scope of her tailoring services offerings. This strategic move led to a significant boost in her daily income, which has now reached Rs 500 per day.

This case highlights the transformative impact that focussed financial interventions contribute to helping achieve financial independence.

Short Term Livelihood Programs for Women, Visakhapatnam

Coromandel in collaboration with **IKKA foundation** designed and launched "Short-term livelihood training programs" for women in 4 villages of Vishakhapatnam which is focussed on providing vocational training. **128 women were provided vocational training for 30 days in 4 different trades** from Feb 2024 to April 2024.(list given below) Post the technical training, IKKA Foundation also collaborated with A-HUB provided from Andhra University for a pre-incubation support for the trainee beneficiaries



Village	Vocational Training provided	No. of Women trained
Yedurivanipalem	Jute Bag Making	29
Gollepalem	Beautician Services	36
Mulagada	Maggam Work	31
Kodipandeladibba	Artificial Jewellery Making	32

Key outcomes of the project –

- **96% of the participants** maintained above 70% attendance throughout the training demonstrating their commitment to entrepreneurship.
- **90% of participants** expressed eagerness to leverage their newfound skills for income generation.
- **100% of participants** received comprehensive practice kits towards the end of their training programmes. These kits are designed to equip them to pursue their respective trades confidently and independently, ensuring they have the necessary tools to generate income moving forward.

Skill Development Training Program, Ennore

Coromandel and **Sambhav Foundation** collaborated in June 2023, aimed to uplift the livelihoods of 50 individuals in Ennore, Tamil Nadu. The initiative focused on empowering the youth through skill development, with the primary goal of enhancing employability and socio-economic conditions. The project achieved this objective by implementing Short-Term Training Programs in Workplace Skills (WPS). Sambhav Foundation conducted virtual sessions on Soft Skills and the English language, providing comprehensive training to the participants.

Key outputs and outcomes of the initiative –

- From 2 batches with 61 participants, 50 received certification, and 34 were successfully placed (*placements assisted by partners like Quess Corp Pvt Ltd, Team Lease, Cameo India Pvt Ltd., HDB Financial Service Limited, Bajaj Finances, and Amro Kings*) while 11 participants chose to discontinue their training.
- The diverse participant demographic in Ennore's workplace skills training comprised 38 individuals aged 18-21, 11 participants in the 26-30 age group, 7 in the 22-25 bracket, and 5 individuals aged 31-35.
- Of the total 61 participants in the workplace skills training program majority were female candidates - 52 were female, while 9 were male.
- Out of the total 61 participants, 59 belonged to the Other Backward Classes (OBC), while 2 participants were from the General category.
- About 56% of program participants successfully secured employment opportunities after the completion of the training program.
- Around 82% of the program participants successfully completed the training, obtaining certification for their acquired skills.



Key Impact Findings

ENVIRONMENTAL INITIATIVES

Key Impact Findings

Environmental Initiatives

CIL CSR project with a focus on Environmental Impact is operational in Gujrat & Andhra Pradesh.

Kakinada, Andhra Pradesh

- Removal of pervasive weed Prosopis Juliflora in the Hope Island mangrove
- Wind and shelter plantation was created across 9 Acres in Hope Island. This served as a carbon sink and to stabilize soil and control erosion.
- Support the nesting site availability for Olive Ridley Turtle population
- 50 Supporting fish nets, 25 boat engines, 20 Ice boxes were provided for 50 boats supporting 2500 people from fishermen community in Kakinada.
- Provision of 2 Bolero vehicles to the Forest Department

The projects have started in 2023. Since environment projects have a long timeframe, the stakeholder feedback has listed the following potential impacts

Key potential Impacts

- **Funding Support:** Coromandel provided crucial financial resources to address the funding gap, enabling the forest department to undertake various **activities such as channeling, seed collection, dibbling, and nursery development**. It facilitated the allocation of necessary resources, including manpower and equipment, for the successful implementation of the preservation activities.
- **Project Advocacy:** Coromandel played a vital role in advocating for the importance of mangrove plantation and convincing government authorities to approve the project.
- **Increased Livelihoods for Fishing Community** – All the **20 villages from the Hope Island** consists of Fishermen Community. The forest department collaborated with local fishermen called the **"People Development Committees"** to utilize the labour of fishermen from surrounding 20 villages. The involvement in conservation activities ensured a steady source of **income for the community through daily wages**.
- **Habitat Preservation** – The restoration of Hope Island as a nesting and breeding place for various marine species (Fishes), birds, turtles etc would help to protect and replenish natural resources. The island's preservation efforts contribute to a healthier marine ecosystem, which can benefit the fishing community in the long term.

"The Bolero vehicles provided by Coromandel have been invaluable in our efforts to protect the forest. These reliable vehicles have enabled us to conduct effective patrols, apprehend poachers, rescue animals, and combat illegal activities. Coromandel's support has been instrumental in ensuring the safety and well-being of both wildlife and the local community."





– S Bharani, IFS, District Forest Office

Establishing Bio-shield | Mangrove Plantation

Coromandel International in collaboration with **VIKAS – Centre for Development**, planned and implemented an environment project in **August 2023** focused towards establishing bio-shield (establishing a green barrier to prevent soil erosion by planting trees) along the coast of Gujarat. **VIKAS CFD in the next 3 years**, will be responsible to plant mangroves in an area of **25 hectare near the bed of Narmada River at Ambheta village of Dahej region of Vagra Taluk, Bharuch District, and Gujarat**.

The projects has started in 2023. Since environment projects have a long timeframe, the key outputs have been listed with potential impacts

Key Outputs till date

Activity	Outputs	Potential Impact after 3 years of implementation
Nursery made in 2023 (Seedlings)	 73,450	A green wall will come up on the coast of Ambheta Village.
Plantation through direct dibbling (seedlings)	 20,000	People will get protection against calamities like sea salt wind, salt sand and tsunami.
Total alive plants in the nursery	 66,170	Soil erosion will reduce and marine life will improve.
Total Mangrove Plantation done till Feb 2024	 66,170	There will be increase in Fish catch, thereby improving the livelihood of the Fishermen.



Key Impact Findings

COMMUNITY DEVELOPMENT INITIATIVES

Key Impact Findings

Community Development Initiatives

Coromandel International's community development initiatives have provided community hall infrastructure, benefiting over 5,000 individuals. Key projects include constructing and renovating community halls, providing rural infrastructure support, and building function halls in Kakinada and Vizag. These initiatives enhance social cohesion, reduce event costs, and create accessible spaces for community gatherings and essential services, demonstrating Coromandel's commitment to building resilient communities.

Coromandel's community development initiatives focus on providing essential infrastructure support to communities. This includes supporting the construction of community halls, renovating community halls, and providing rural infrastructure support. These initiatives demonstrate a commitment to building stronger and more resilient communities.

Total Outreach of the Community Development Initiatives

Activity	Outputs	Timeline
Community Hall construction in Vakalpudi, (Kakinada)	Constructed the Community Hall in 700 sqft which will help the local people in Vakalpudi cutting off their expenses for renting marriage halls which otherwise used to cost them more than 1 lakhs or so.	Jan 2024 – March 2024
Construction of Community Function Hall at Valasapakala, (Kakinada)	5400-sqft community hall, was built in Valasapakala at a total cost of INR 94 lakh and has a capacity to seat over 350+ members across the function hall and dining facilities. The G+1 Community Function Hall also has a Dias and two separate rooms.	May 2023
Rural Infrastructure Development through District Administration (Kakinada)	Based on the request from District Collector and Local M.L.A, Coromandel International Limited has donated an amount of Rs.52 lakhs to the District Administration of Kakinada District.	Feb 2024
Community Hall Infrastructure development (Vizag)	5 Community Halls constructed in 5 villages, 10 Borewells installed in 10 villages, 4 open gyms made in 4 villages, School Building renovation in 1 village	2024

Outcomes

Construction of Community Function Hall at Valasapakala, (Kakinada)

- The community hall will be utilized by 4500 people comprising of 250 fishermen families and other 350 families nearby.
- Presently no community hall is available within 5km radius that is being maintained by Panchayat at lower cost.
- The community hall also serves as a common premise for community gatherings, medical and health programmes, livelihood training centre for almost 600 women who got registered with SHGs.

Rural Infrastructure Development through District Administration (Kakinada)

- Completion of incomplete multipurpose utility hall Construction at Panduru village, Kakinada rural Mandal
- Construction of Multipurpose utility hall for BC community at Gorripudi village of Karapa, Kakinada rural constituency
- Construction of community hall at Karapa village, Kakinada Rural
- Improvement of infrastructure Facility at MRO office, Ramanayapeta.
- Rs.2 lakhs spent towards Completion of Balance work electrification at Beach Road, Nemam

Community Hall Infrastructure development (Vizag)

Increased Access to Services: The facility provides a convenient and affordable space for the community to conduct various programs. **The building can accommodate 100 people** and there is enough space around the building, so any function could be done conveniently.

- **Community Empowerment:** The facility empowers the community by providing a platform for social activities, education, and skill development. The community hall, which serves **approximately 600 families in the village**, is available for rent at a nominal fee
- **Reduced Costs for Events:** The community hall will provide a cost-effective venue for various events, such as marriages, family functions, and community meetings. Other private function halls charge around 50,000 to 1 Lakh which community people cannot afford.
- **Increased Accessibility:** The hall will offer a convenient and accessible space for community activities, eliminating the need for families to travel to private function halls. The hall is located nearby from most homes in the village, making it easily accessible for residents.
- **Enhanced Social Cohesion:** The hall will serve as a gathering place for the community, fostering social interaction and strengthening community bonds.

Overall, the multipurpose community facility is expected to have a significant positive impact on the community by promoting engagement, empowerment, and improved health and well-being.

Stakeholder Quote - *"The community hall has been a lifesaver for our families. We've been able to save a significant amount of money on events like weddings and funerals. Families can now easily save around Rs. 50,000 to 1 Lakh by using this community hall for wedding functions. It's also a great space for community meetings and activities. The hall has truly become a valuable asset for our village. Coromandel has truly improved the family's savings by constructing this community hall"*

- Nookaratnam – SHG Leader – Valasapakala